

Installing the System Tray

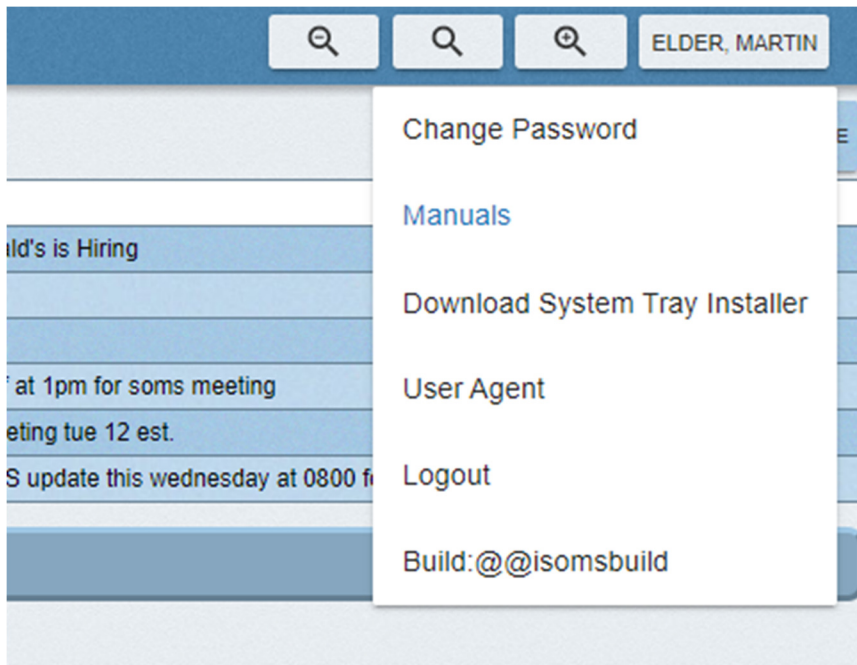
Required to use IP Camera and Signature Pad and other hardware

Can only be used on Windows Machine

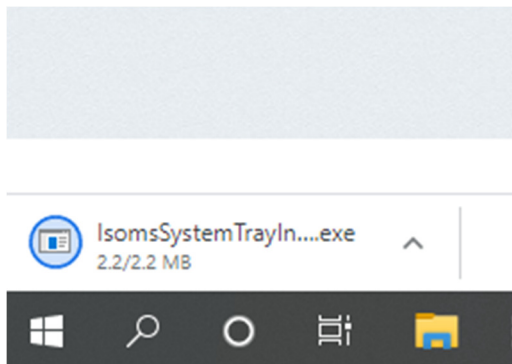
Make sure you have enough access in your browser to download and install a program

Login to iSOMS

In the upper right click on your name, then Download System Tray Installer

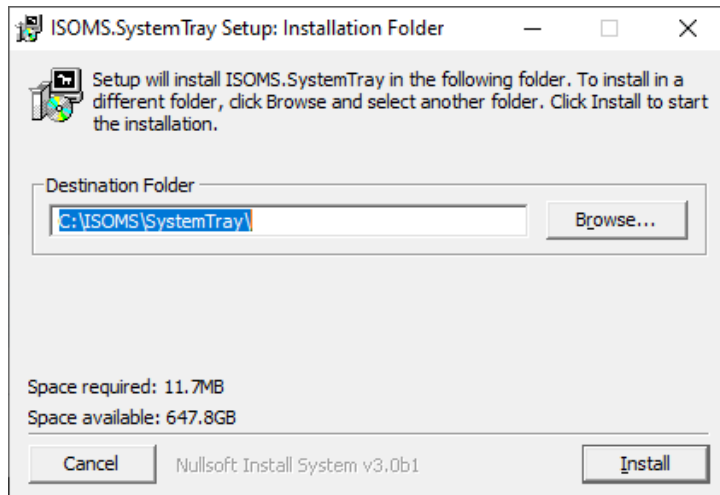


It will download to your computer, then click to run



The default location is fine, if you want to move to another folder you can change it here

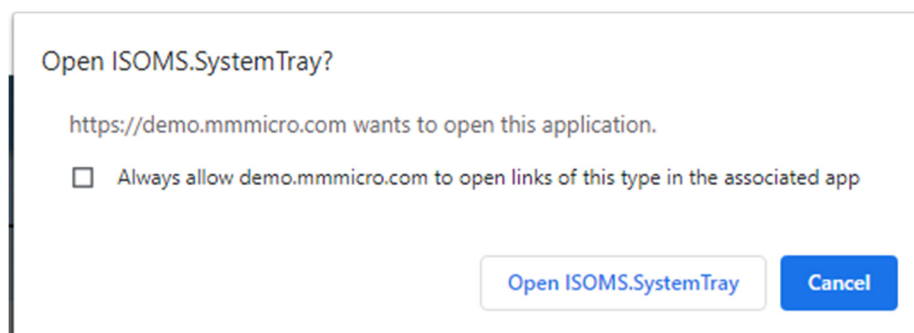
Click Install (lower right) to start. Should only take a few seconds



When you first click on Import a Photo or Get Inmate Signature or connect to any piece of equipment we interface with this is the most import screen.

You can choose to click just "Open iSoms.SystemTray" button in the lower right, but you would have to that each time you connect to equipment. If that is your agency policy please continue.

If you would like it to remember this setting click the check box to "Always Allow" and then open button.



Your security, or installed Anti-Virus or Malware programs may block this program. If so contact your administrator to they can allow it to run.